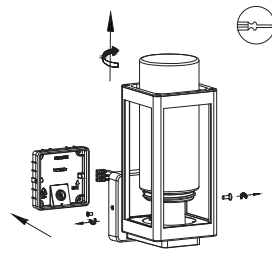
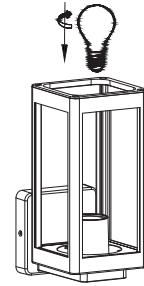


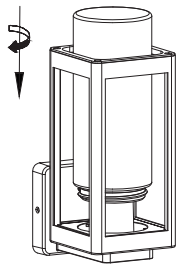
1. Turn off the general switch.



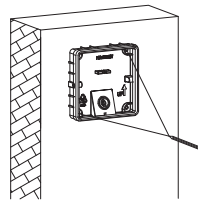
2. By rotating dismantle
The product



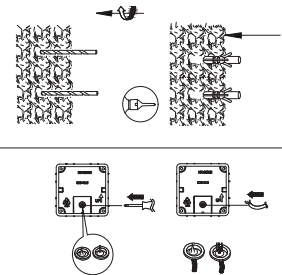
3. Install the bulb.



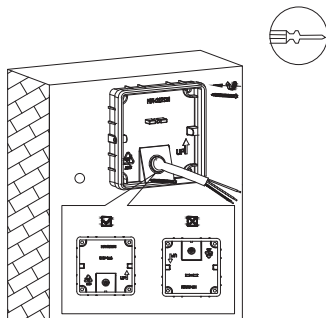
4. Install the glass cover.



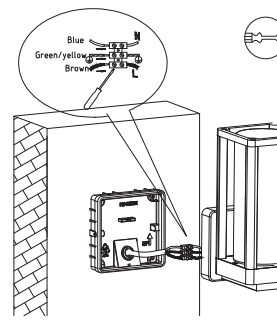
5. Mark the area.



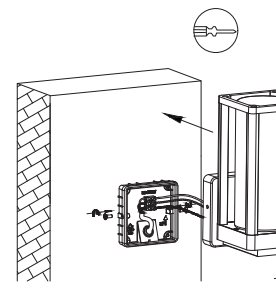
6. Make a hole with a screwdriver
& Pass the cables through



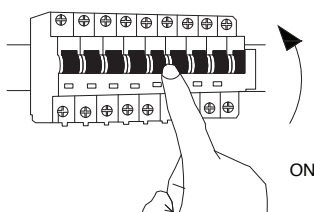
7. Make sure it is
In the correct possession



8. Connect the wires.



9. Apply the product in to
Place with the screws



10. Turn on the general switch.

